

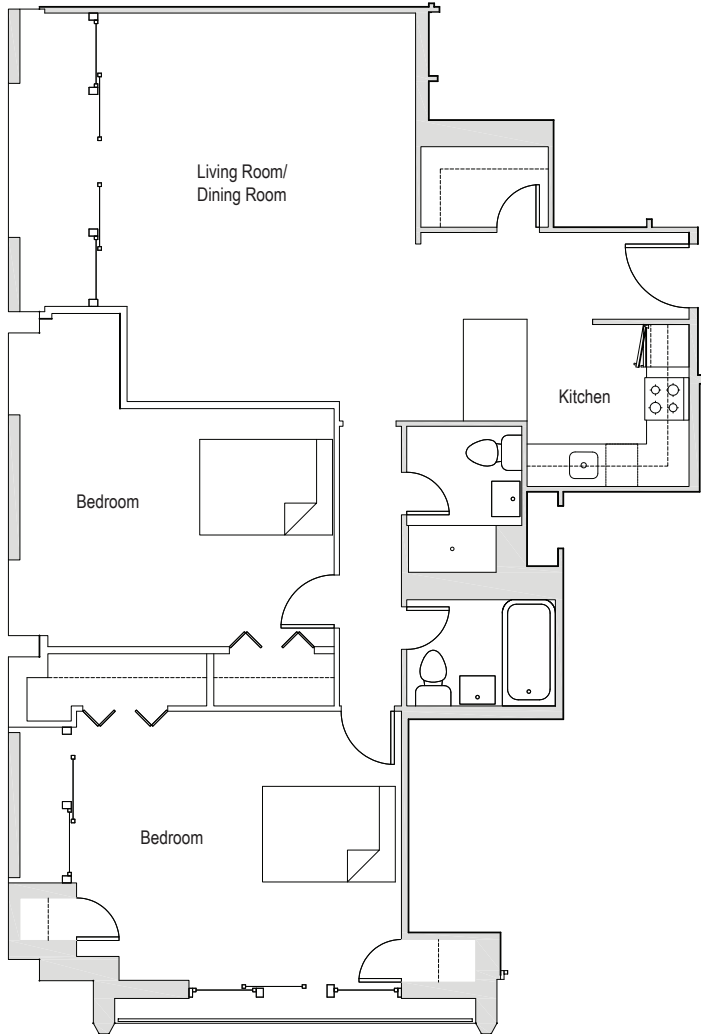
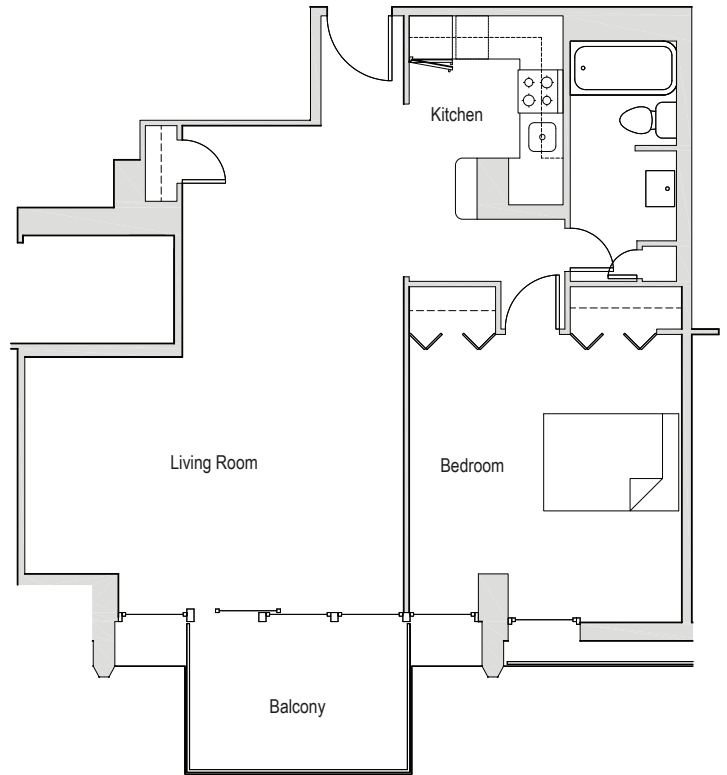
301 G Street SW

Washington, DC 20024

Apartments 127-827

1 Bedroom/1 Bath

- Wenge finish cabinetry w/ quartz counters, tile backsplash, stainless appliances, and breakfast bars
- Huge windows and sliding patio doors
- Large floor plans with big balconies
- Large closets
- Hardwood flooring
- Great views
- Central heat and AC



Apartments 128-828

2 Bedroom/2 Bath

- Wenge finish cabinetry w/ quartz counters, tile backsplash, stainless appliances, and breakfast bars
- Huge windows and sliding patio doors
- Large floor plans with big balconies
- Large closets
- Hardwood flooring
- Great views
- Central heat and AC

CAPITOL PARK TOWER

www.UIPPM.com

140 Q Street • Washington, DC 20002

leasing@uippm.com

(202) 244-3811 Main Office Press #3 for Leasing



U·I·P | **property**
management, inc.

Professional • Courteous • Reliable

