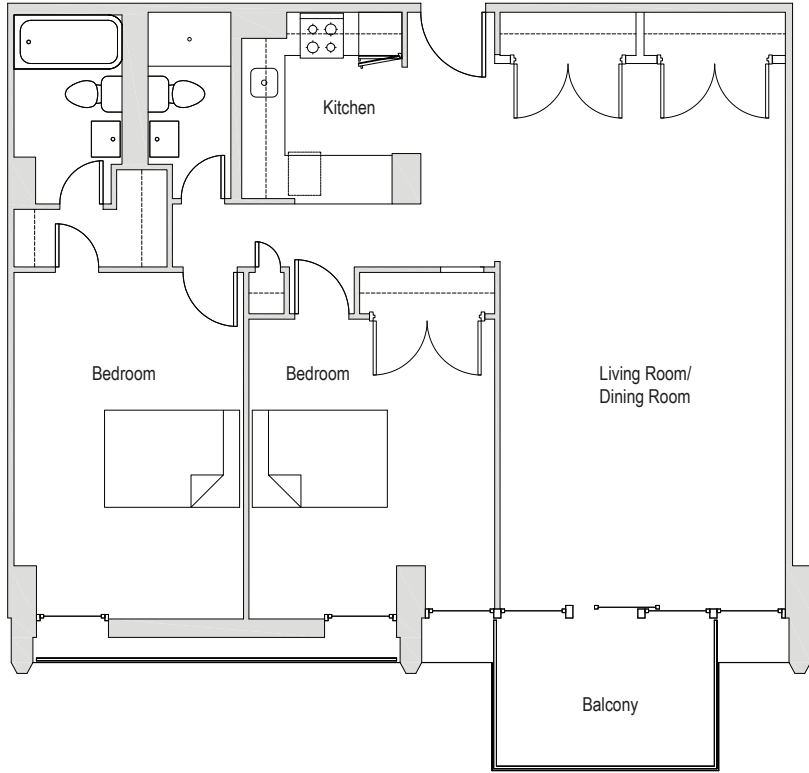


# 301 G Street SW

Washington, DC 20024

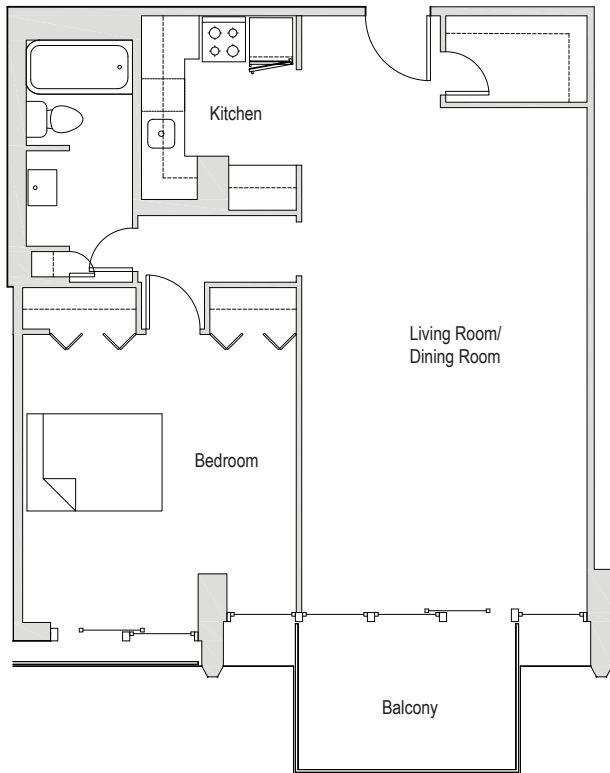
CAPITOL PARK TOWER



## Apartments 119-819

### Junior 2 Bedroom/2 Bath

- Wenge finish cabinetry w/ quartz counters, tile backsplash, stainless appliances, and breakfast bars
- Huge windows and sliding patio doors
- Large floor plans with big balconies
- Large closets
- Hardwood flooring
- Great views
- Central heat and AC



## Apartments 120-820

### 1 Bedroom/1 Bath

- Wenge finish cabinetry w/ quartz counters, tile backsplash, stainless appliances, and breakfast bars
- Huge windows and sliding patio doors
- Large floor plans with big balconies
- Large closets
- Hardwood flooring
- Great views
- Central heat and AC

[www.UIPPM.com](http://www.UIPPM.com)

140 Q Street • Washington, DC 20002

leasing@uipm.com

(202) 244-3811 Main Office Press #3 for Leasing



**U·I·P** | property  
management, inc.

Professional • Courteous • Reliable

