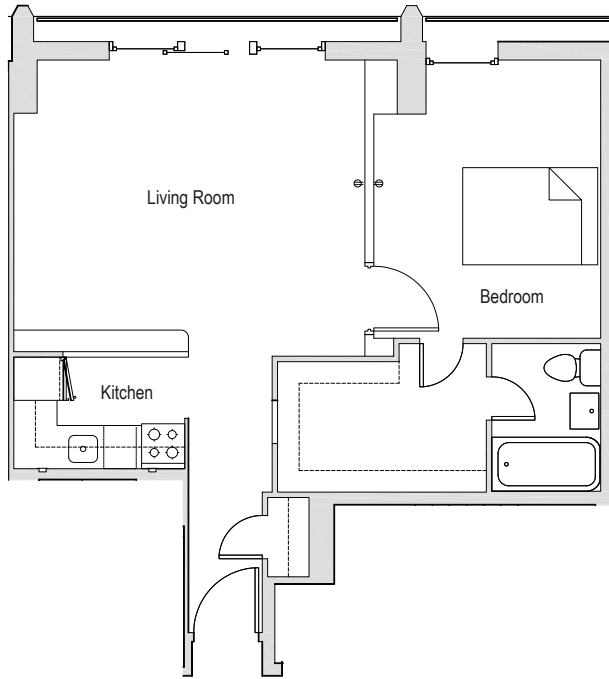


301 G Street SW

Apartments 111-811

Washington, DC 20024

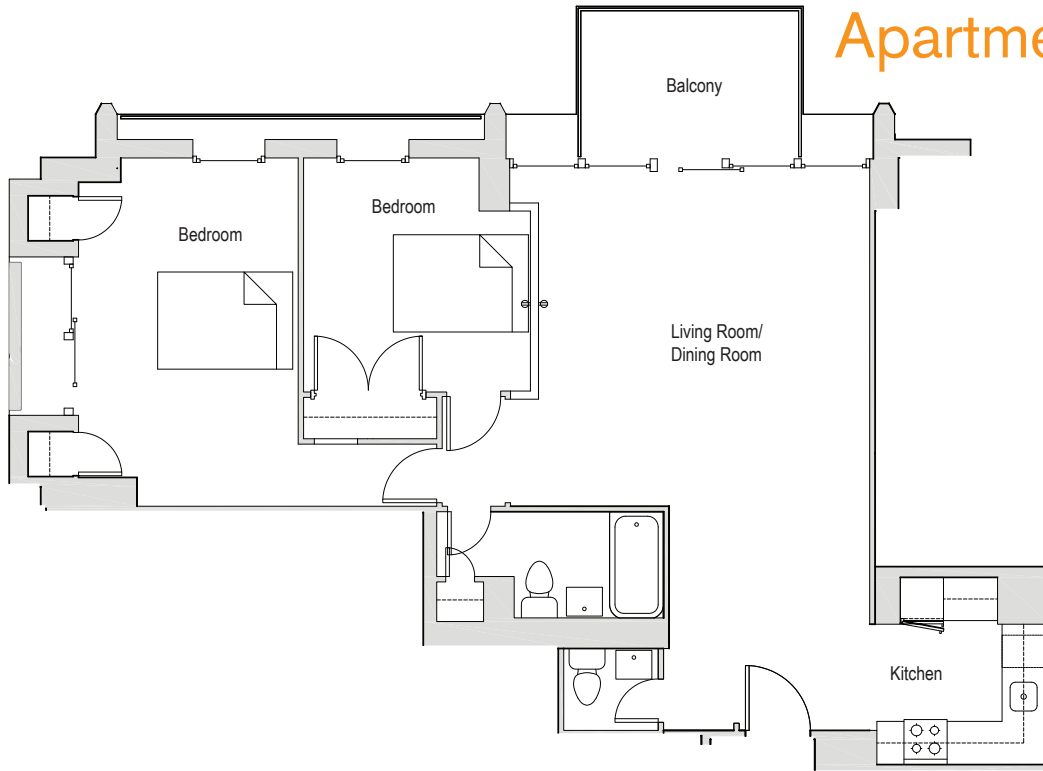


1 Bedroom/1 Bath

- Wenge finish cabinetry w/ quartz counters, tile backsplash, stainless appliances, and breakfast bars
- Huge windows and sliding patio doors
- Large floor plans with big balconies
- Large closets
- Hardwood flooring
- Great views
- Central heat and AC

CAPITOL PARK TOWER

Apartments 112-812



Junior 2 Bedroom/1.5 Bath

- Wenge finish cabinetry w/ quartz counters, tile backsplash, stainless appliances, and breakfast bars
- Huge windows and sliding patio doors
- Large floor plans with big balconies
- Large closets
- Hardwood flooring
- Great views
- Central heat and AC

www.UIPPM.com

140 Q Street • Washington, DC 20002

leasing@uippm.com

(202) 244-3811 Main Office Press #3 for Leasing



Professional • Courteous • Reliable

